

à Theodor Niemann.

ECOLOGUE
pour Cor anglais
(ou Alto ou Violon)

avec Accompagnement de Piano

par
Ch. Akimenko.

OP. 12.

Pour Cor anglais Pr. $\frac{M. 1.40}{B. 50}$

Pour Alto ou Violon Pr. $\frac{M. 1.40}{B. 70}$

Propriété de l'Éditeur pour tous Pays.

Enregistré aux Archives de l'Union!

M. P. BELAÏEFF, LEIPZIG.

1901

2028 2029

Inst. Lit. de C. S. Böden, Leipzig.

ECLOGUE.

(ELEGIA.)

Th. Akimenko, Op. 12. 1900 r.

Andantino elegiaco.

Corno inglese.

Piano.

p *accel.* *poco*

a tempo
p molto espressivo
a tempo

a *poco* *riten.*

mf *dim.* *riten.*

mf *dim.* *riten.*

a tempo

a tempo
p

mf *dim.*

mf *dim.*

Più mosso. (Moderato.)

p *mf*

p *mf*

pp *riten.*

pp *riten.*

a tempo
mf *pp*

riten. *a tempo*
mf *pp* *p*

cresc. e allargando

Tempo I. (Andantino.)

p *accel.* *poco a poco* *riten.*

a tempo

a tempo

p

mf

mf

dim.

dim.

p

riten.

pp

p

riten.

pp

Corno inglese

Th. Akimenko, Op.12. 1900

ECLOGUE

(ELEGIA)

ECLOGUE.

(ELEGIA.)

Corno inglese.

Th. Akimenko, Op.12. 1900 r.

Andantino elegiaco.

a tempo
p molto espressivo

mf

dim. *riten.* *a tempo* *p*

mf

dim. *p* 1

Più mosso. (Moderato.)
mf

Corno inglese.

pp *riten.*

a tempo
mf

pp *riten.*

a tempo
p

cresc. e allargando Tempo I.
4

(Andantino.)
p

mf *dim.*

riten.
p *pp*

Viola

Theodore Akimenko

ECLOGUE

(ELEGIA)

Op. 12. 1900

ECLOGUE

Viola (derived from Cor anglais)

(ELEGIA)

Th. Akimenko, Op. 12. 1900 r.

Andantino elegiaco

4

a tempo

p molto espressivo

mf

riten.

a tempo

p

mf

dim.

p

Piu mosso. (Moderato.)

mf

pp *riten.*

a tempo
mf

pp *riten.* 1

a tempo
p

cresc. e allargando Tempo I
4

(Andantino)
p

mf *dim.*

p *riten.* *pp*

Violino

Theodore Akimenko

ECLOGUE

(ELEGIA)

Op. 12. 1900

ECLOGUE

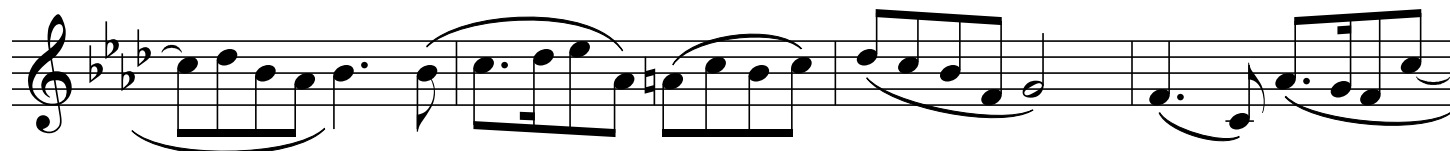
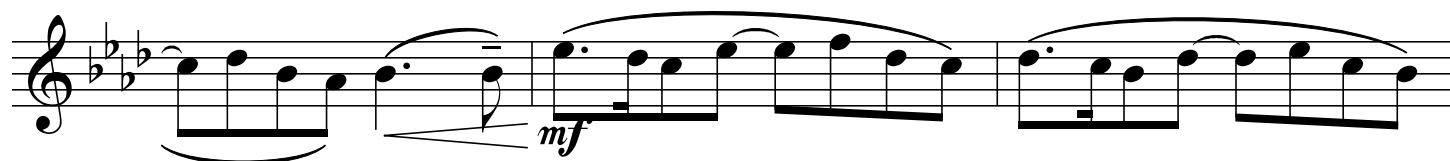
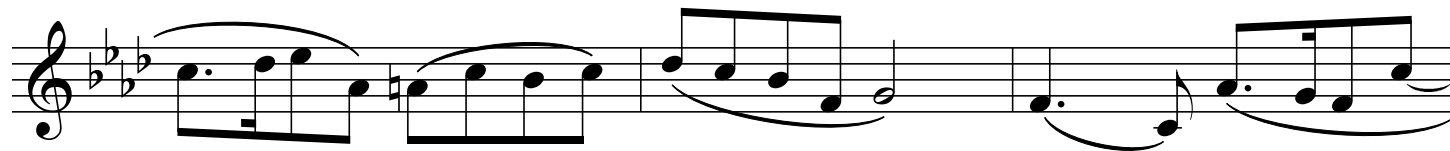
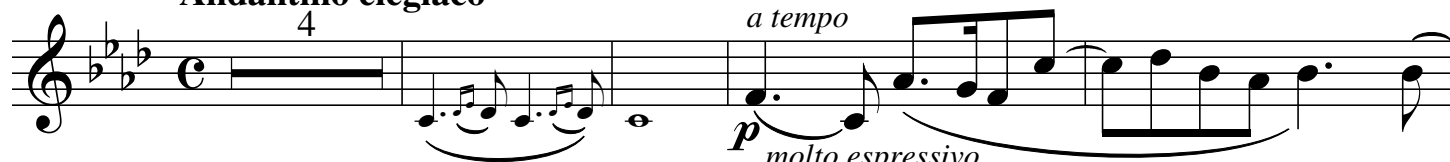
Violino (derived from Cor anglais)

(ELEGIA)

Th. Akimenko, Op. 12. 1900 r.

Andantino elegiaco

4

*a tempo**p*
molto espressivo

Piu mosso (Moderato)

mf

pp *riten.*

a tempo
mf

pp *riten.*

a tempo
p

cresc. e allargando *Tempo I*

(Andantino)
p

mf *dim.*

p *riten.* *pp*

Theodore Akimenko

ECLOGUE

(ELEGIA)

Op. 12. 1900

ECLOGUE

Corno inglese

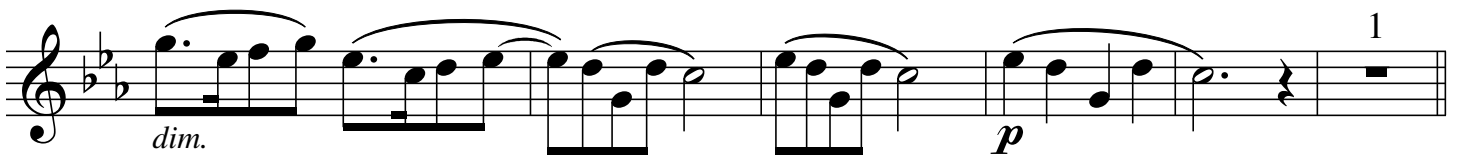
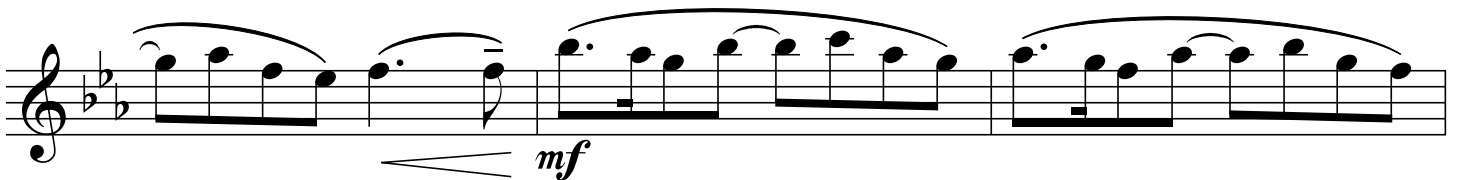
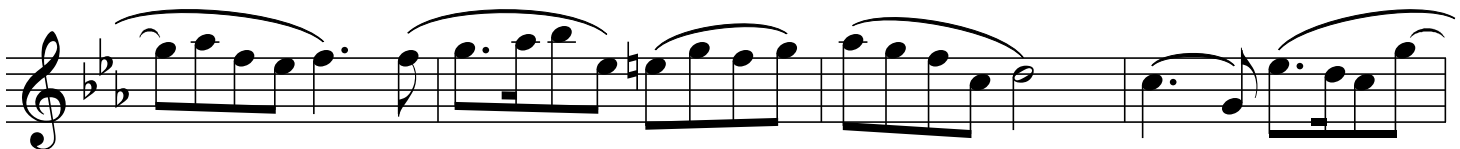
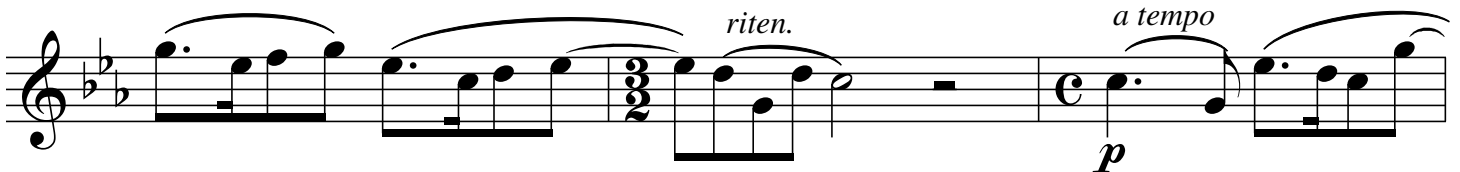
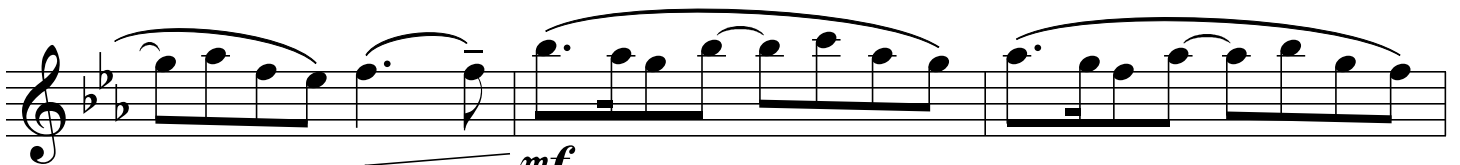
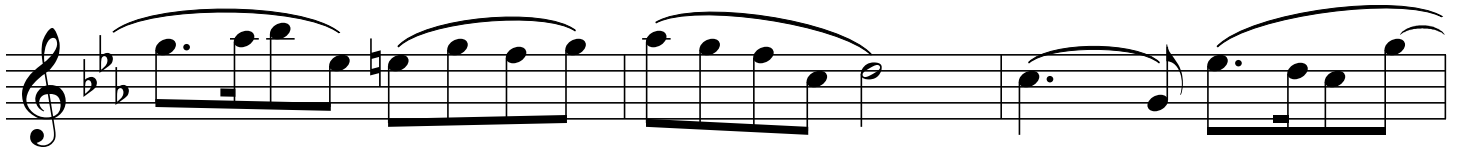
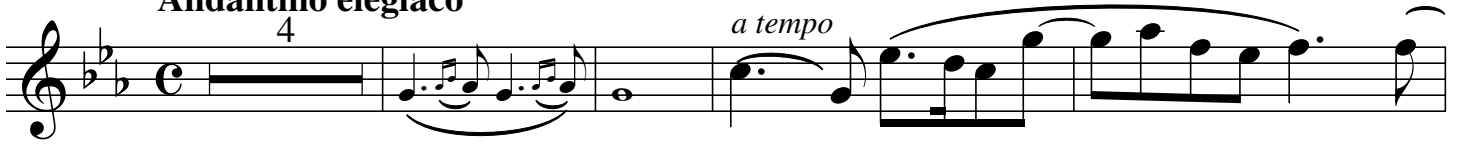
(ELEGIA)

Th. Akimenko, Op. 12. 1900 r.

Andantino elegiaco

4

a tempo



Piu mosso. (Moderato.)



pp

a tempo
mf

pp
riten.

a tempo
p

cresc. e allargando
Tempo I
4

(Andantino)
p

mf

mf
dim.

p
pp
riten.